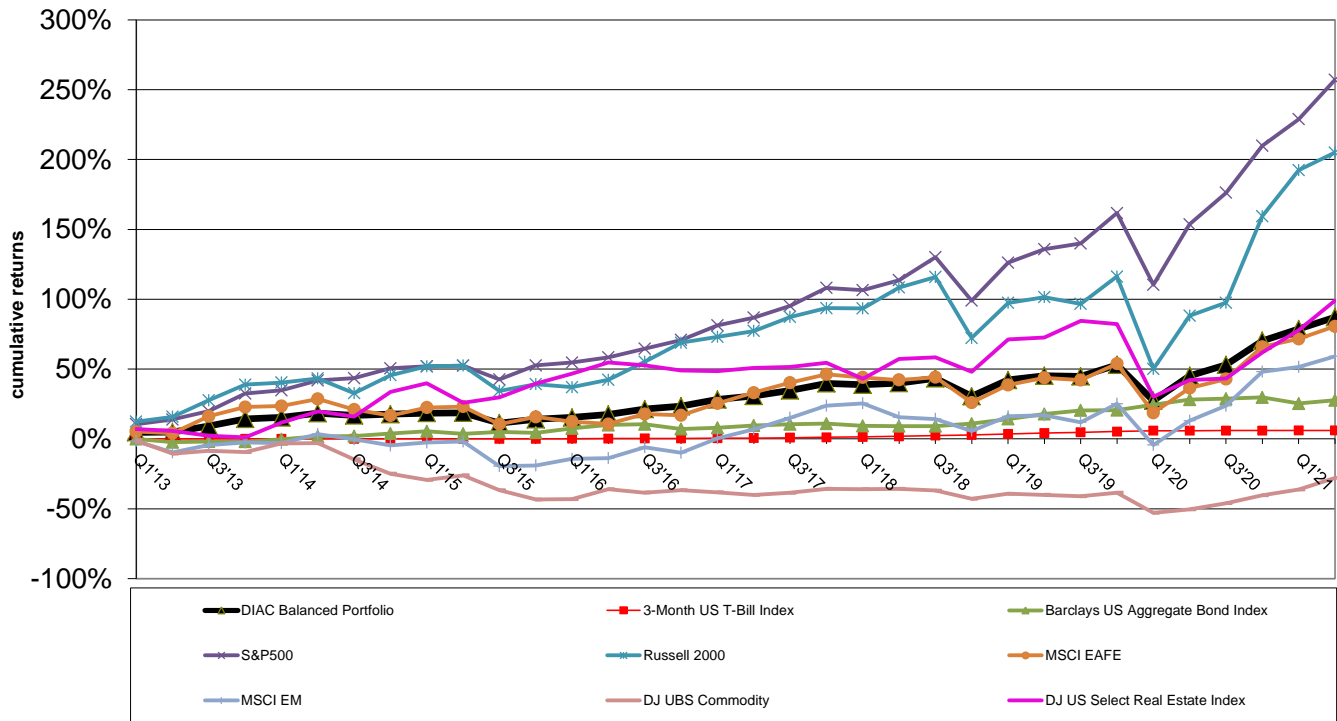


Note: Past performance is no guarantee of future results. DIAC's investment results are net of all fees.
 Please see the two pages of disclosures that accompany these historical performance charts.

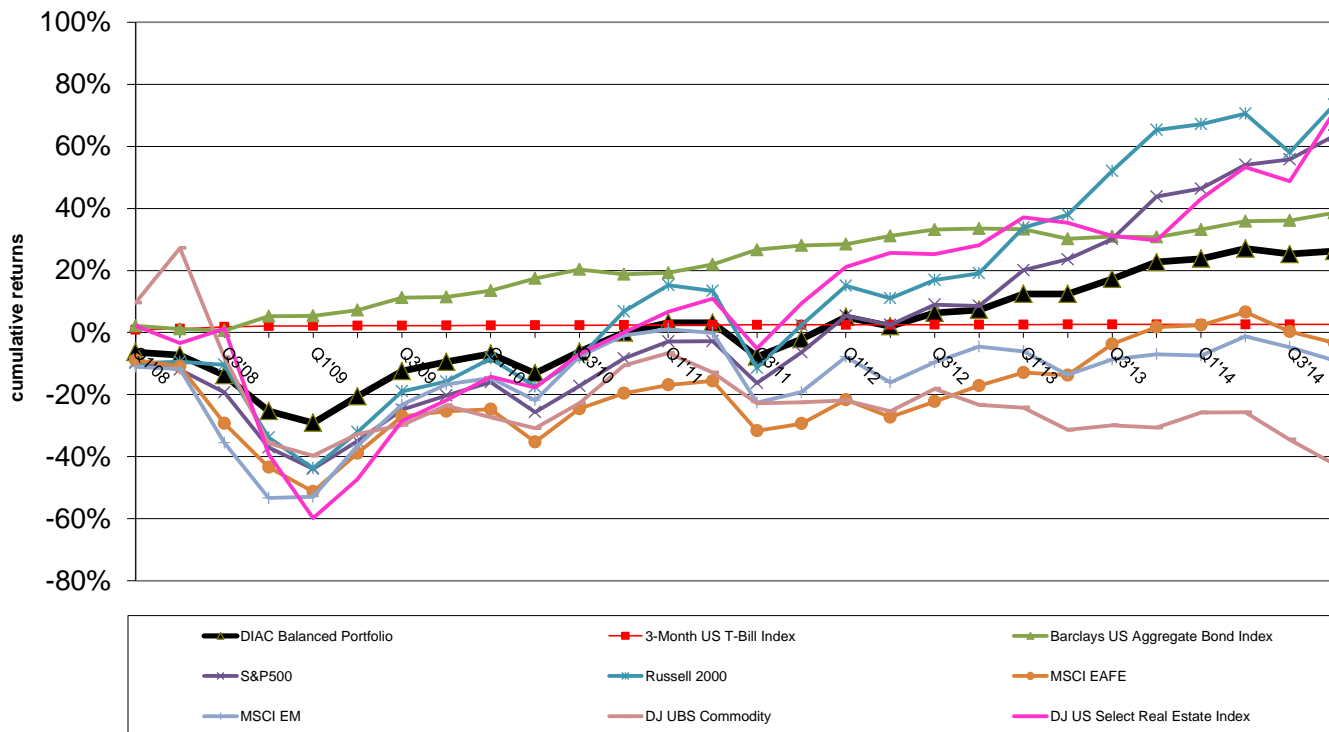
DIAC Balanced Portfolio: 60% - 70% Equities & 30% - 40% Fixed Income 8.5-Years: 2013 through 6/30/2021



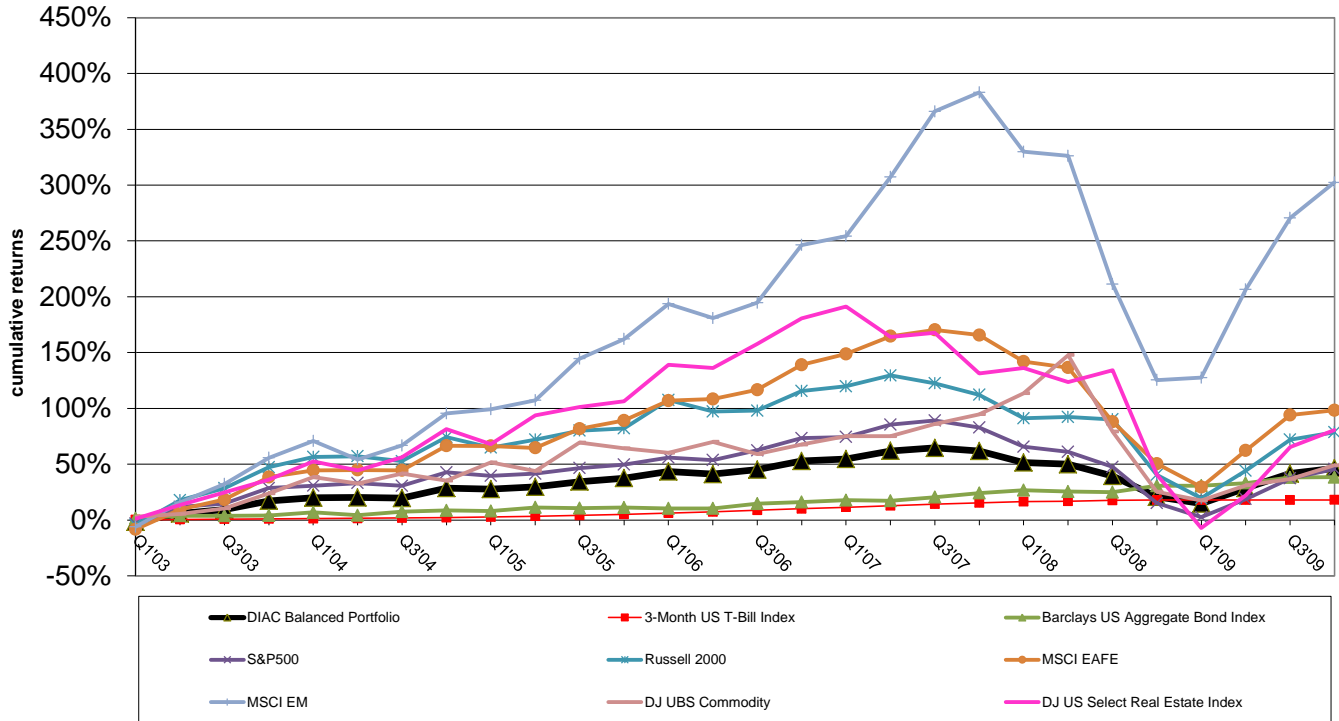
S&P500 = US Large Company Equities
 MSCI EAFE = Non-US Large Co. Equities

Russell 2000 = US Small Company Equities
 MSCI EM = Emerging Market Equities

DIAC Balanced Portfolio: 60% - 70% Equities & 30% - 40% Fixed Income 7-Years: 2008 through 2014



DIAC Balanced Portfolio: 60% - 70% Equities & 30% - 40% Fixed Income 7-Years: 2003 through 2009



Market Index & DIAC Balanced Portfolio Volatility Quarterly Returns - 1/1/2003 through 6/30/2021

